

Pilgrim Creek Wildland Fire—Blackrock Ranger District

October 5th, 2020



Date of Detection: September 30, 2020

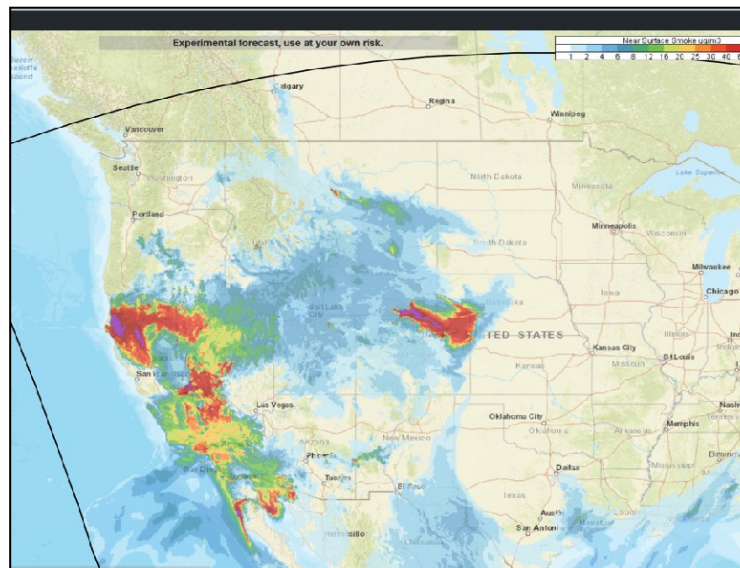
Current Size: October 5th, 230 acres

Location: Northeast of the Pilgrim Creek drainage. South of Wildcat Mountain.

Closures: Pilgrim Creek road and area closure in the Pilgrim Creek drainage ([see map](#))

Legal Description: Latitude 43,59.39 N Longitude 110' 34. 03 W

Management Strategy: Point protection strategy with consideration and mitigation methods for wilderness protection involving minimum impact suppression tactics.



Yesterday's transport winds/Smoke Map shows the vast coverage of smoke from the fires burning to the west of Wyoming

10/5 UPDATE; October 4th the Pilgrim Fire experienced minimal fire behavior due to national and regional smoke coverage over the area. The smoke cover produced by the Pilgrim Fire also provided shade and cooler temperatures directly over the fire's perimeter. The winds over the fire did not appear as breezy as in the valley, and this also inhibited new fire spread. The updated acres add an estimated 20 new acres to the northern perimeter for approximately 230 acres mapped. An updated map will be produced once significant acres require aerial mapping. [Fire Weather for Today](#)

Currently, there are six wildland firefighters from the Caribou Targhee National Forest, two firefighters from Grand Teton National Park, Teton Interagency Wildland Fire Module and one helicopter are committed to the incident. Crews continue with strategies to prevent the fire from crossing the the Pilgrim Creek and delivering intel on the fire's activity back to fire managers in town. With the possibility of a change in weather the crews monitor weather and fire behavior observations to validate and feed behavior modeling to support planning efforts both tactically and logistically.

Thank you to the Moran and Buffalo Valley community for the cooperation and support through their Wildfire Neighborhood Ambassador Program.

Visit Tetonfires.com for maps, current fire information, Fire Restrictions and Fire Prevention Tips



**Public Information Map
Pilgrim Creek Fire**